

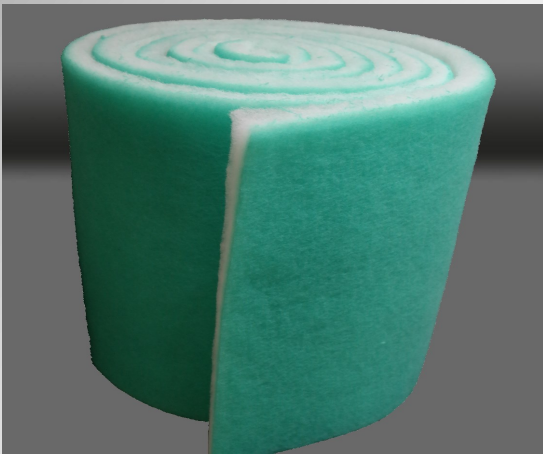


PRODUCT SPECIFICATION SHEET

MODEL: SPA2 Synthetic Paint Arrestor Media Progressively Dense– 2" Thick

DESCRIPTION

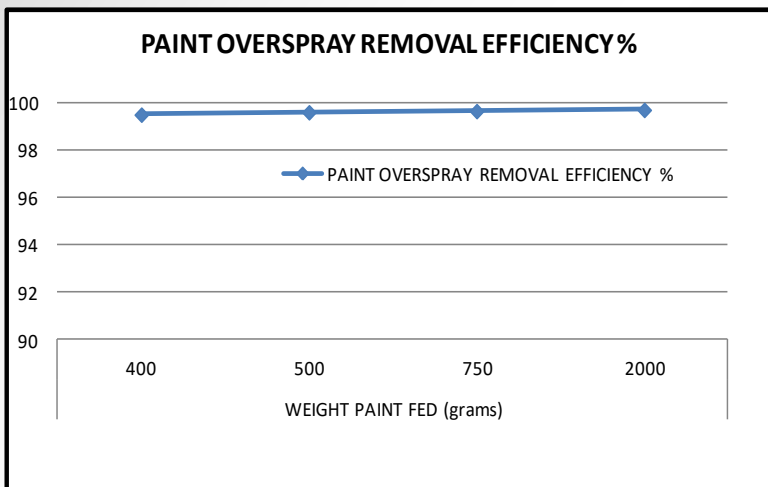
The Filter Systems Model SPA2 is a paint arrestor product for use in a variety of exhaust applications ranging from automotive spray booths to industrial manufacturing spray booths. It consists of 2" thick progressively dense synthetic media and is pigmented on the air leaving side to aid in proper installation. The media is available in pads/blankets, or in rolls.



FEATURES

- ✓ Suitable for a variety of paint overspray applications.
- ✓ 99.7% average spray removal efficiency.
- ✓ Initial pressure drop of .05" @ 150 FPM.
- ✓ Meets testing and performance requirements of NESHAP 40CFR63 Subpart 6H.
- ✓ Weight of 1.45 OZ/SQ.FT.
- ✓ All components rated UL 900 for flammability.
- ✓ Paint holding capacity of 1.67 LBS/SQ.FT. of media.
- ✓ Thermally stable to 212 degrees F.
- ✓ Typically land-fillable (contains no known hazardous materials).
- ✓ Available in pads, blankets or full rolls.

TEST DATA



***Actual test report available upon request.

SELECTION CHART

PART #	SIZE	DESCRIPTION
SPA2-2020	20"x20"	Synthetic Paint Arrestor Pad
SPA2-2025	20"x20"	Synthetic Paint Arrestor Pad
SPA2-2424	24"x24"	Synthetic Paint Arrestor Pad
SPA2-CUSTOM	L"xW"	Synthetic Paint Arrestor Pad/Blanket
SPA2-2050	20"x50'	Synthetic Paint Arrestor Roll
SPA2-2450	24"x50'	Synthetic Paint Arrestor Roll
SPA2-3050	30"x50'	Synthetic Paint Arrestor Roll
SPA2-3650	36"x50'	Synthetic Paint Arrestor Roll
SPA2-4850	48"x50'	Synthetic Paint Arrestor Roll
SPA2-6050	60"x50'	Synthetic Paint Arrestor Roll
SPA2-7250	72"x50'	Synthetic Paint Arrestor Roll
SPA2-12050	120"x50'	Synthetic Paint Arrestor Roll

Custom sizes available. Call for quote

Distributed by:



45406 Trevor Ave.
Lancaster, CA 93534
TEL: 800-540-4 AIR
FAX: 805-981-8675
E-MAIL: sales@filtersystemsusa.com
WEB: www.filtersystemsusa.com